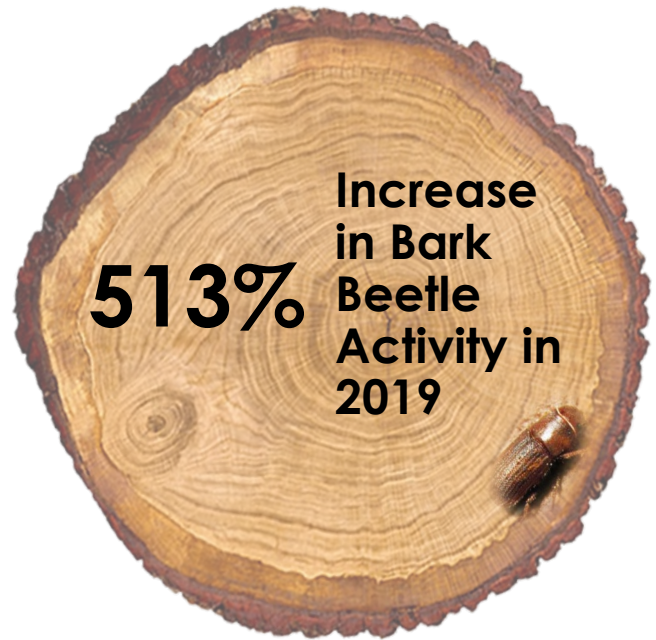




BARK BEETLE REDUCTION COST SHARE PROGRAM

What's Bugging AZ Trees? ←

Bark beetles are very small insects that feed on phloem, the "sugary" tissue that lies between the bark and the wood of a tree. As they feed, they create tunnels; this tunneling, when severe enough, will ultimately cause the tree to die. Bark beetles typically prefer to attack weakened, stressed trees. When bark beetles find forested areas that contain weak, stressed trees, they produce an aggregate pheromone that attracts more beetles to the area.



► You Can Help!

When beetle population levels reach epidemic proportions, they can and will attack healthy trees. The usually green swaths of healthy forest become painted with a rust-colored brush as infestations cause trees to die. Removing bark beetle infested trees has proven to reduce bark beetle spread in otherwise healthy, high-value stands.

To assist in maintaining healthy forests and reduce bark beetle infestations, the **Bark Beetle Reduction Cost Share Program** gives landowners financial assistance to remove infested trees.





BARK BEETLE REDUCTION COST SHARE PROGRAM

What Is The Bark Beetle Reduction Cost Share Program?

The Bark Beetle Reduction Cost Share Program helps landowners rapidly respond to active bark beetle infestations by paying 50% of the cost of tree removal. This program aims to help private landowners near or adjacent to National Forest System land reduce the spread of bark beetles. The goals of this program support the mission of the Department of Forestry and Fire Management by:

- » **Protecting Healthy Forests**
- » **Supporting Communities**
- » **Reducing Wildfire Risk**
- » **Reducing Impacts of Prolonged Drought**

Questions?

Cori Dolan
Forest Health Program Manager
Dept. of Forestry and Fire Mgt.
cdolan@dffm.az.gov

1/2 Paid for by Bark Beetle Reduction Cost Share Program



How Does It Work?

STEP 1: If you suspect bark beetle infestation, simply call or email to let us know you're interested in the Cost Share Program. Then we'll email you a form to fill out that will help us schedule a time to assess your property.

Call [602]-771-1400

Email foresthealth@dffm.az.gov

STEP 2: A local forester or natural resource professional will perform an onsite assessment of your property and flag infested trees.

STEP 3: After the assessment, you have 30 days to get quotes from contractors to remove the flagged trees and send those quotes to the Department of Forestry and Fire Management. Based on the quotes, you pick which company you'd like to work with and pay half the total amount directly to the contractor.

STEP 4: Once tree removal is conducted, a local forester will return to your property to ensure the work was completed. The Department of Forestry and Fire Management will then pay the remaining 50% of the total cost directly to the contractor.

