



**ARIZONA DEPARTMENT
 OF FORESTRY AND FIRE
 MANAGEMENT**
EXECUTIVE SUMMARY
REPORT
Current Fire Activity



March 2, 2018 08:00 hrs
 (Report covers previous 7 days)

National Preparedness Level: 1
 Southwest Area: 1 Arizona Forestry and Fire: 1

Statewide Weather Brief: Arizona received no lightning strikes in the past 7 days. Cold front moving into the region, bringing breezy conditions with possible precipitation into the higher elevations. Warming weather expected Monday through Thursday with temperatures ranging in the mid 70s in the lower deserts.

Arizona Department of Forestry and Fire Management (DFFM) Activity: DFFM received 16 wildfire reports in the past 7 days. No resources were dispatched to fires outside of the state in the past 7 days.

Statewide Summary

New Wildfires		
	# of Fires	Acres
State and Private Lands	1	0.10
Federal and Tribal Lands	4	0.60
Multi-jurisdictional*	0	0.00
Total New Wildfires	5	0.70
Ongoing Significant Wildfires from Previous Days		
State and Private Lands	0	0.00
Federal and Tribal Lands	0	0.00
Multi-jurisdictional*	0	0.00
Total Ongoing Wildfires	0	0.00
Managed for Resource Benefit Fires		
State and Private Lands	0	0.00
Federal and Tribal Lands	0	0.00
Multi-jurisdictional*	0	0.00
Total Ongoing Resource Benefit Fires	0	0.00
Total Fires	5	0.70
National Year to Date Statistics		
Human Caused	123	4,820.00
Lightning Caused	2	3.00
Total YTD Wildfires**	125	4,823.00
2017 YTD Wildfires**	82	704.00

*Multi-jurisdictional = Fires with perimeter on both State/Pvt. & Federal/Tribal Lands.
 ** YTD data can differ due of reporting schedule of interagency fires and acres. Acreage is rounded to nearest acre.

Wildfire Detailed Information

New Fires

Incident Name	Start Date	Incident Acres	Percent Contained	County	Cause	Land Status
MISTY	2/26	0.10	100	Cochise	unknown	DFFM
Resources Assigned			A-0	C-0	E-1	O-0

New Misc. Small Fires

	DFFM/FD(s)	BIA	BLM	FWS	NPS	USFS
Fires	0	2	0	0	0	2
Acres	DFFM/FD(s):		0.00	Federal/Tribal:		0.60

Significant Ongoing Wildfires from Previous Days

Incident Name	Start Date	Incident Acres	Percent Contained	County	Cause	Land Status
None						

Significant Managed Resource Benefit Fires

Incident Name	Start Date	Incident Acres	Percent Contained	County	Cause	Land Status
None						

Note: A = Aircraft, C = Crews, E = Equipment, O = Overhead

AZ DFFM Resources Assigned to Fires this Reporting Period

AIRCRAFT	0	CREWS	0	EQUIPMENT Engines, Tenders, Ambulances	1*	OVERHEAD	0
-----------------	----------	--------------	----------	---	-----------	-----------------	----------

* 0 Pieces of Equipment Assigned Out of State.

** 0 Overhead Resources Assigned Out of State.

AZ DFFM Crews

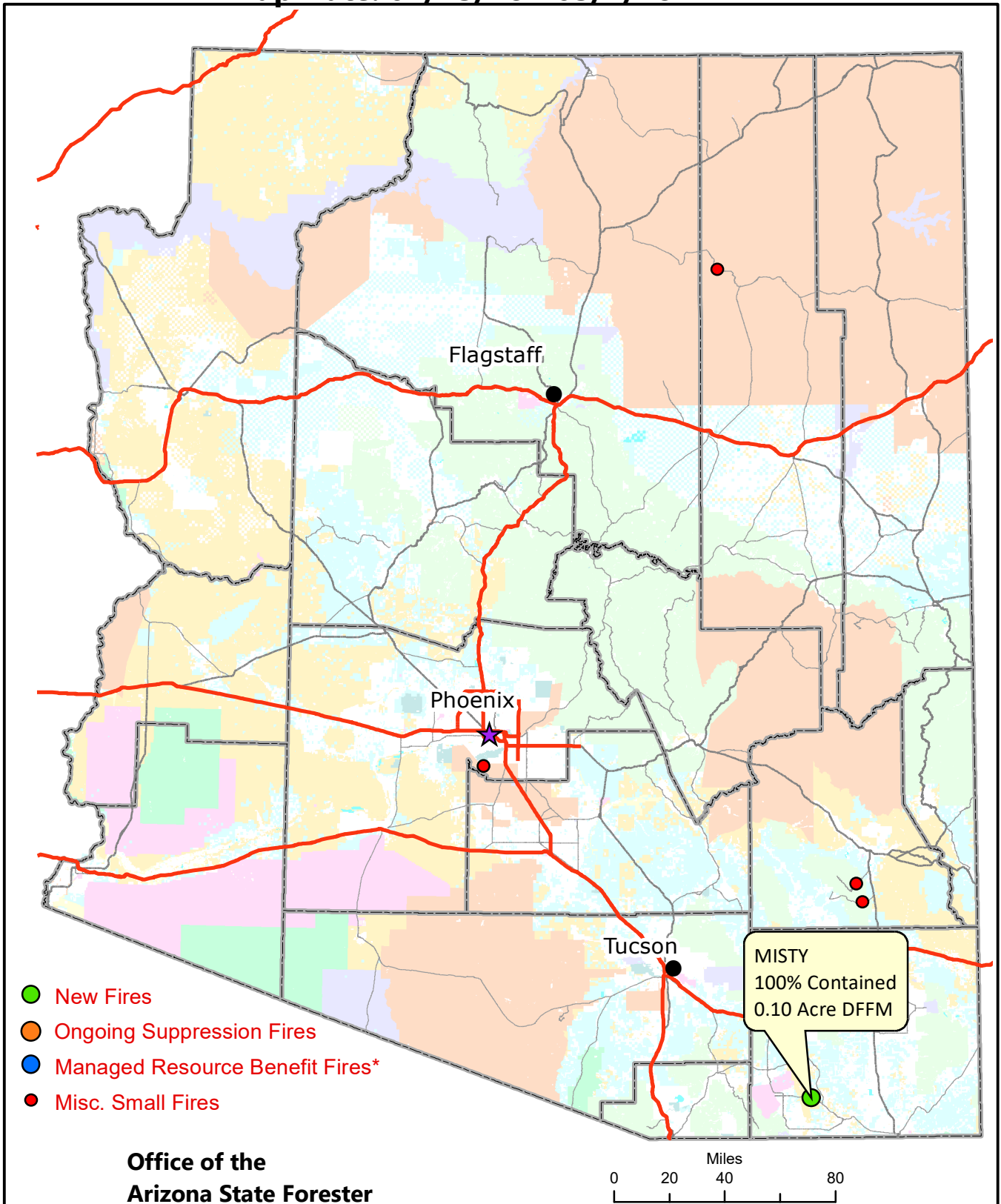
DISTRICT	CREW	STATUS	INCIDENT
A1S	Winslow	Not Committed	
	Diablo Canyon	Not Committed	
	Bear Jaw	Not Committed	
	Flagstaff Fire	Not Committed	
A2S	Escudilla	Not Committed	
	Wolf Mountain	Not Committed	
A3S	Douglas	Not Committed	
	Florence	Not Committed	
	Ft. Grant	Not Committed	
	Tucson 1	Not Committed	
A4S	Perryville	Not Committed	
	Superstition	Not Committed	
	Yuma	Not Committed	
A5S	Lewis	Not Committed	

AZ DFFM Engines

DISTRICT	ENGINE (Type - ID)	STATUS	INCIDENT
A1S	T3 - Engine 131	Not Staffed	
	T6 - Engine 161	Not Staffed	
A2S	T3 - Engine 231	Not Staffed	
A3S	T3 - Engine 331	Not Staffed	
	T6 - Engine 361	Not Staffed	
	T6 - Engine 362	Not Staffed	
	T6 - Engine 363	Not Staffed	
A4S	T3 - Engine 431	Not Staffed	
	T6 - Engine 561	Not Staffed	
A5S	T3 - Engine 531	Not Staffed	

Arizona Wildland Fire Activity

Map Date: 02/23/18 - 03/2/18 AM



Fire acreage may be based on estimates from overnight information (Infrared flights and other data sources) and may not have been verified. For official fire acreage and other information refer to <http://inciweb.nwcc.gov> or <http://gacc.nifc.gov/swcc/>. *Updated every Monday or unless significant activities occur.